



## REGIONAL SPECIALISED METEOROLOGICAL CENTRE-TROPICAL CYCLONES, NEW DELHI UPDATED TROPICAL WEATHER OUTLOOK

### DEMS-RSMC TROPICAL CYCLONES NEW DELHI DATED 29.12.2023

**TROPICAL WEATHER OUTLOOK FOR NORTH INDIAN OCEAN (THE BAY OF BENGAL AND THE ARABIAN SEA) VALID FOR NEXT 168 HOURS ISSUED AT 1330 UTC OF 29.12.2023 BASED ON 1200 UTC OF 29.12.2023.**

#### BAY OF BENGAL:

THE CYCLONIC CIRCULATION OVER NORTHEAST BAY OF BENGAL & ADJOINING BANGLADESH AT 1.5 KM ABOVE MEAN SEA LEVEL PERSISTED OVER THE SAME REGION AT 1200 UTC OF TODAY, THE 29<sup>TH</sup> DECEMBER, 2023.

SCATTERED LOW AND MEDIUM CLOUDS WITH EMBEDDED INTENSE TO VERY INTENSE CONVECTION LAY OVER SRILANKA, SOUTHWEST BAY OF BENGAL (MINIMUM CLOUD TOP TEMPERATURE MINUS 80 DEG CEL). SCATTERED LOW AND MEDIUM CLOUDS WITH EMBEDDED MODERATE TO INTENSE CONVECTION LAY OVER PALK STRAIT, GULF OF MANNAR AND ISOLATED WEAK TO MODERATE CONVECTION LAY OVER REST OF SOUTH BAY OF BENGAL & CENTRAL BAY OF BENGAL.

#### \*PROBABILITY OF CYCLOGENESIS (FORMATION OF DEPRESSION) DURING NEXT 168 HRS:

24 HOURS	24-48 HOURS	48-72 HOURS	72-96 HOURS	96-120 HOURS	120-144 HOURS	144-168 HOURS
NIL	NIL	NIL	NIL	NIL	NIL	NIL

\*NOTE: EVERY 24HR FORECAST IS VALID UPTO 0300 UTC (0830 IST) OF NEXT DAY

#### ARABIAN SEA:

AN UPPER AIR CYCLONIC CIRCULATION LAY OVER WEST EQUATORIAL INDIAN OCEAN AND ADJOINING SOUTHEAST ARABIAN SEA EXTENDING UPTO MID-TROPOSPHERIC LEVELS AT 1200 UTC OF 29<sup>TH</sup> DECEMBER, 2023. UNDER ITS INFLUENCE, A LOW PRESSURE AREA IS LIKELY TO FORM OVER THE SAME REGION BY 0300 UTC OF TOMORROW, THE 30<sup>TH</sup> DECEMBER. IT IS LIKELY TO BECOME WELL DURING SUBSEQUENT 24 HOURS.

SCATTERED LOW AND MEDIUM CLOUDS WITH EMBEDDED INTENSE TO VERY INTENSE CONVECTION LAY OVER WEST EQUATORIAL INDIAN OCEAN AND ADJOINING SOUTH ARABIAN SEA, MALDIVES AREA, COMORIN AREA AND ADJOINING LAKSHADWEEP (MINIMUM CLOUD TOP TEMPERATURE MINUS 90 DEG CEL).

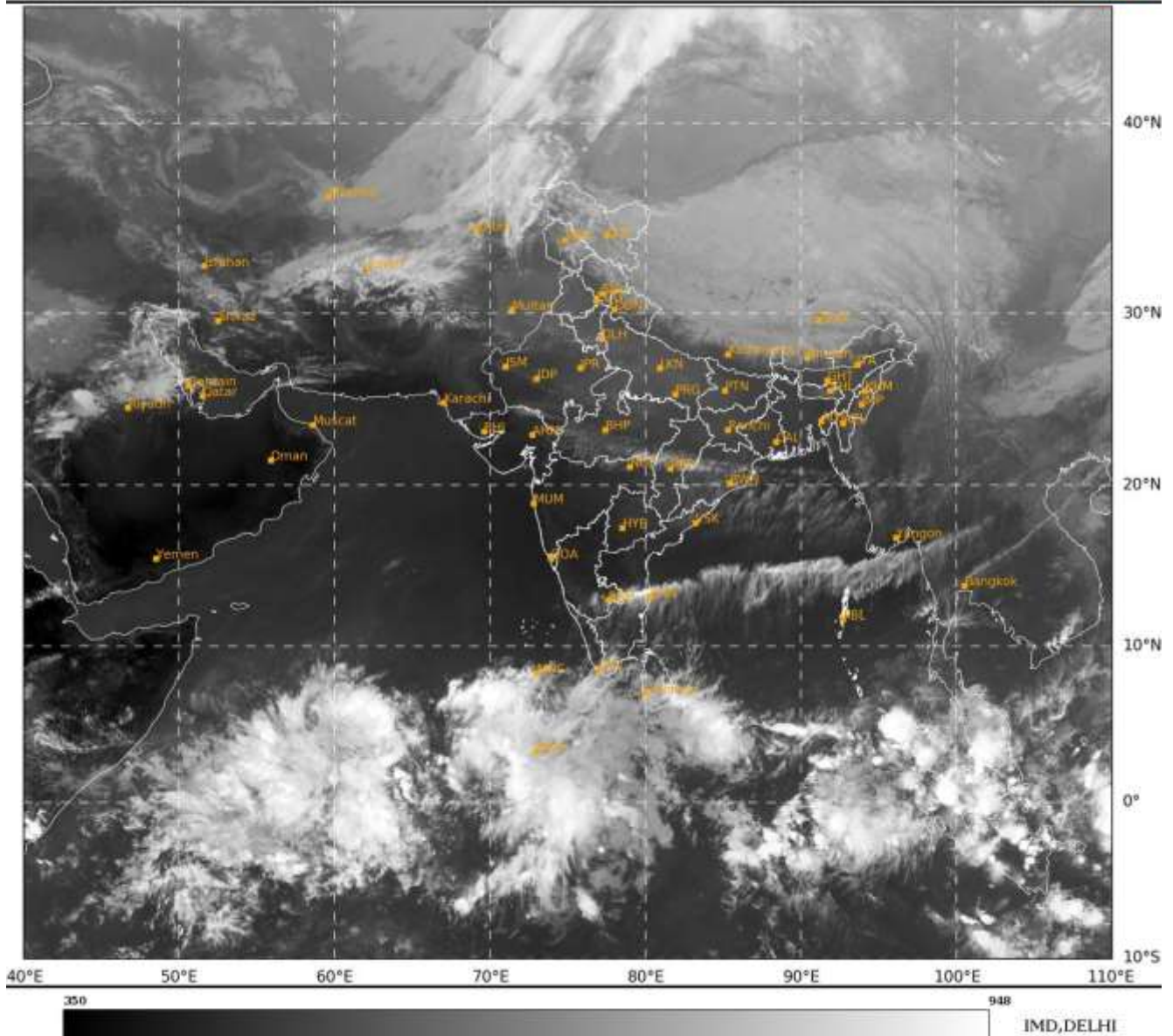
#### \*PROBABILITY OF CYCLOGENESIS (FORMATION OF DEPRESSION) DURING NEXT 168 HRS:

24 HOURS	24-48 HOURS	48-72 HOURS	72-96 HOURS	96-120 HOURS	120-144 HOURS	144-168 HOURS
NIL	LOW	LOW	MODERATE	NIL	NIL	NIL

\*NOTE: EVERY 24HR FORECAST IS VALID UPTO 0300 UTC (0830 IST) OF NEXT DAY

SAT : INSAT-3DR IMG  
 IMG\_TIR1 10.8 um  
 LIC Mercator

29-12-2023/(1145 to 1212) GMT  
 29-12-2023/(1715 to 1742) IST



Cloud distribution: (a) Isolated: <25%, Scattered:25-50%, Broken: 51-75%, Solid:>75%, Convection Intensity: (a) Weak: Cloud Top Temperature (CTT) >-25°C, (b) Moderate: CTT: - 25°C to -40°C, (c) Intense: CTT: - 41°C to -70°C and (d) Very Intense: : Less than -70°C  
 PROBABILITY OF CYCLOGENESIS (FORMATION OF DEPRESSION):NIL: 0%, LOW: 1-33%, , MODERATE: 34-66% AND HIGH: 67-100%  
 This is a guidance Bulletin for WMO/ESCAP Panel Member countries. Visit respective National websites for Country specific Bulletins